

Answer Key

lung

heart

liver

stomach

large intestine

small intestine

appendix

trachea

rib cage

inferior vena cava

abdominal aorta artery

gallbladder

spinal column

spleen

kidney

pancreas

ureter

bladder



© Learning Resources, Inc., Vernon Hills, IL (U.S.A.)
Learning Resources Ltd., King's Lynn, Norfolk (U.K.)
Please retain our address for future reference.
Made in China. LRM1814-GUD

www.LearningResources.com



For a dealer near you, call:
(847) 573-8400 (U.S. & Int'l)
(800) 222-3909 (U.S. & Canada)
+44 (0)1553 762276 (U.K. & Europe)

Inflatable Human Anatomy Torso Model

Activity Guide

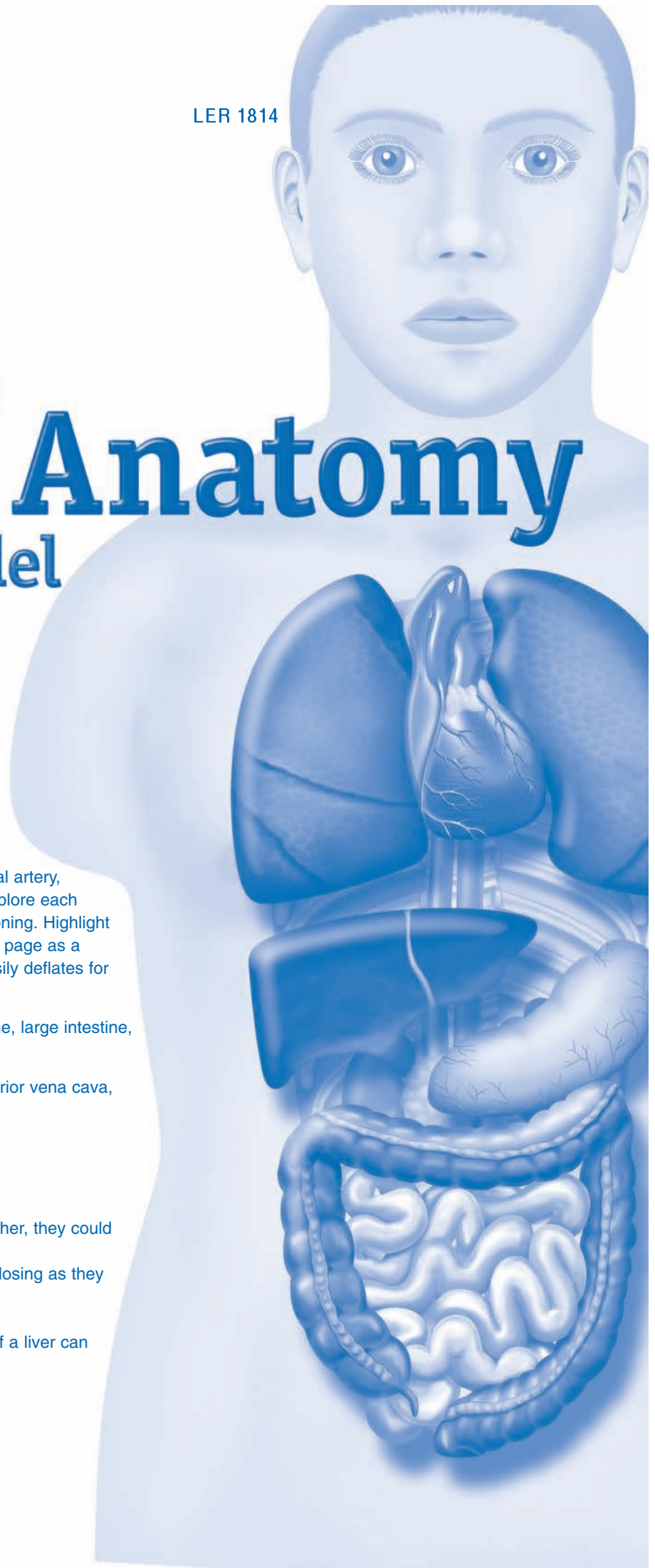
Learn the inner workings of the human body. The Inflatable Anatomy Torso features eighteen organs that can be explored through hands-on activities or used for classroom decoration. The lungs, heart, liver, stomach, small intestine, large intestine, and appendix detach from the torso to reveal the underlying organs. The underlying organs include the trachea, rib cage, spinal column, aorta, inferior vena cava, renal artery, pancreas, spleen, gallbladder, kidneys, bladder, and ureter. Explore each organ to learn how they work together to keep the body functioning. Highlight one organ at a time or study them all at once. Use the labeling page as a work sheet or quiz for students. When not in use, the torso easily deflates for convenient storage.

Detachable organs: lungs, heart, liver, stomach, small intestine, large intestine, and appendix.

Attached organs: trachea, rib cage, spinal column, aorta, inferior vena cava, pancreas, spleen, gallbladder, kidneys, bladder, and ureters.

Anatomy Facts

- Every minute, you breathe in 13 pints of air.
- The heart is about the size of a clenched fist.
- If all the blood vessels in a human body were strung together, they could circle the globe 2½ times.
- A heartbeat is really the sound of the valves in the heart closing as they push blood through its chambers.
- Human lungs contain almost 1500 miles of airways.
- The liver is capable of regeneration. Approximately 67% of a liver can grow back in one week.
- In one day, an average heart beats 100,000 times.
- The stomach creates a new lining every three days.



Anatomy Definitions

aorta main artery which carries blood from the heart to the rest of the body

appendix small, functionless, tube-like structure attached to the first part of the large intestine

bladder the hollow organ in the lower abdomen that stores urine

gallbladder pear-shaped organ that stores bile from the liver until the body needs it for digestion

heart the main organ of the circulatory system that constantly moves and pumps blood throughout the entire body

Inferior vena cava large vein that returns blood from legs and abdomen to the heart

kidneys part of the urinary system that filters and removes waste from blood; aids in regulating the body's fluids and blood pressure

large intestine final part of the digestive system that turns waste and other indigestible food into feces

liver the largest internal organ that aids digestion, controls metabolism, and removes harmful substances from blood

lungs part of the respiratory system that supplies oxygen from the air to our blood and removes carbon dioxide from our blood to the air

Inflation Instructions

1. The inflatable pieces must reach room temperature before they are inflated to reduce temperature shock that can cause defects.
2. For best results, inflate by blowing into the valve with your mouth only.
3. Inflate the inner cavity first. Then inflate the outer cavity. See Figure 1.
4. Do not over inflate. Do not attempt to remove every wrinkle from the pieces.
5. Where there are multiple sections, inflate slowly, allowing air to seep into the smaller sections.
6. After inflating, cover the valve opening with your finger. Pinch the valve at its base with your fingers and insert the plug into the valve opening. Quickly insert the plug fully into the valve opening until the head of the plug touches the opening. Press the valve into the piece until the valve is flat with the surface of the object.

pancreas part of the endocrine system that produces insulin to regulate the amount of sugar in the blood; aids the digestion process and helps control metabolism

rib cage part of the skeletal system that protects many internal organs including the heart and lungs

small intestine part of the digestive system that takes nutrients from food and deposits them in the bloodstream; the longest internal organ

spine (spinal column) part of the skeletal system that contains the spinal cord; composed of 33 vertebrae that bend and flex, allowing movement of the back and neck

spleen organ in the abdomen that holds a reservoir of blood and helps destroy old red blood cells

stomach part of the digestive system that contains acid to help break down food for the body to absorb

trachea principle tube by which air passes to and from the lungs

ureter thin, walled tube that carries urine from the kidney to the bladder

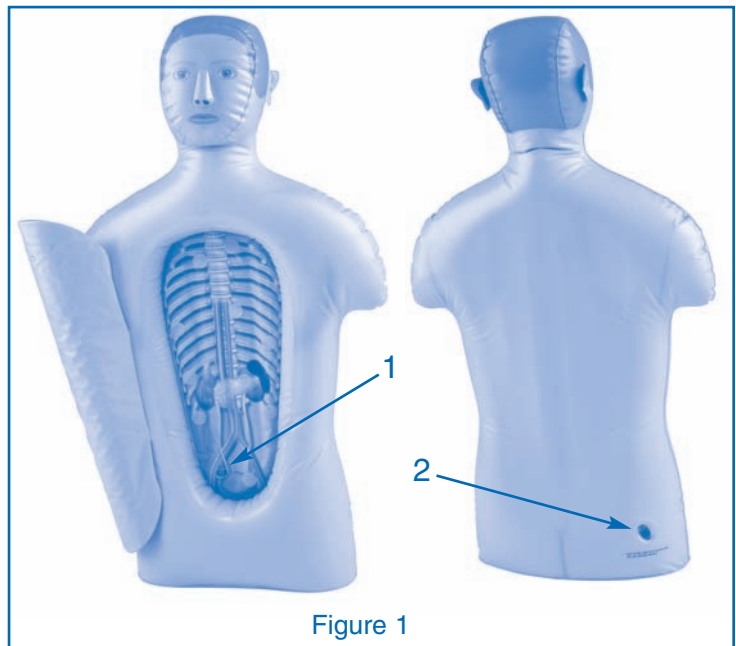


Figure 1

CAUTION: Do not inflate with an air compressor or any other high pressure hose. Do not pull on valves.
THIS IS NOT A LIFESAVING DEVICE.

Maintenance and Deflation

1. Do not drag pieces over sharp objects or surfaces.
2. Avoid contact with hot or sharp objects.
3. To clean, rinse with lukewarm water and let air dry.

Name _____ Date _____

Human Anatomy

Directions: Label the internal organs.

liver rib cage abdominal aorta artery
appendix pancreas spinal column
trachea spleen kidney

large intestine heart lung
small intestine gallbladder ureter
inferior vena cava stomach bladder

