

Human Anatomy Model

Assembly Guide

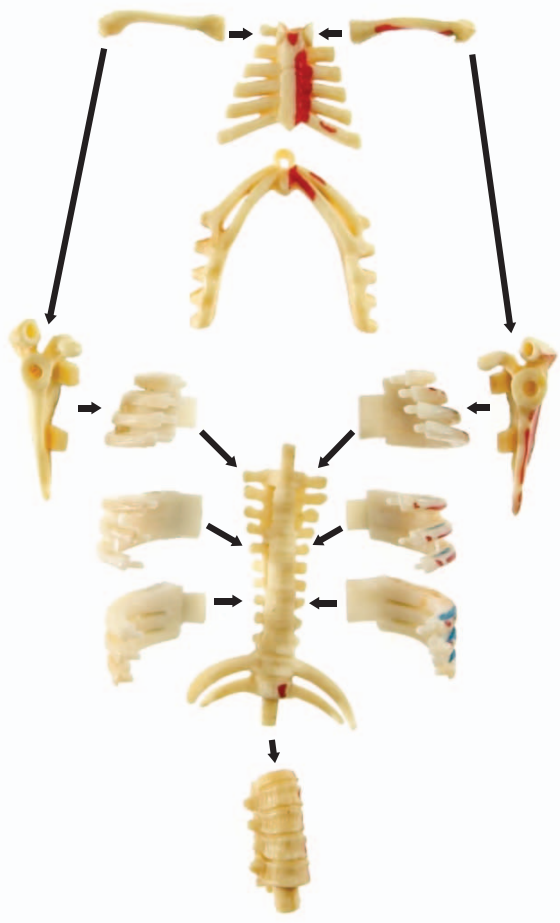
The human skeleton consists of over two hundred connecting bones that work together to give the body its shape and support. Without a skeleton the human body would be a soft, shapeless blob of muscle and organs. The skeleton not only provides the body structure, but also protects internal organs, stores essential minerals such as calcium, produces red blood cells, and connects with muscles to allow the body to move.

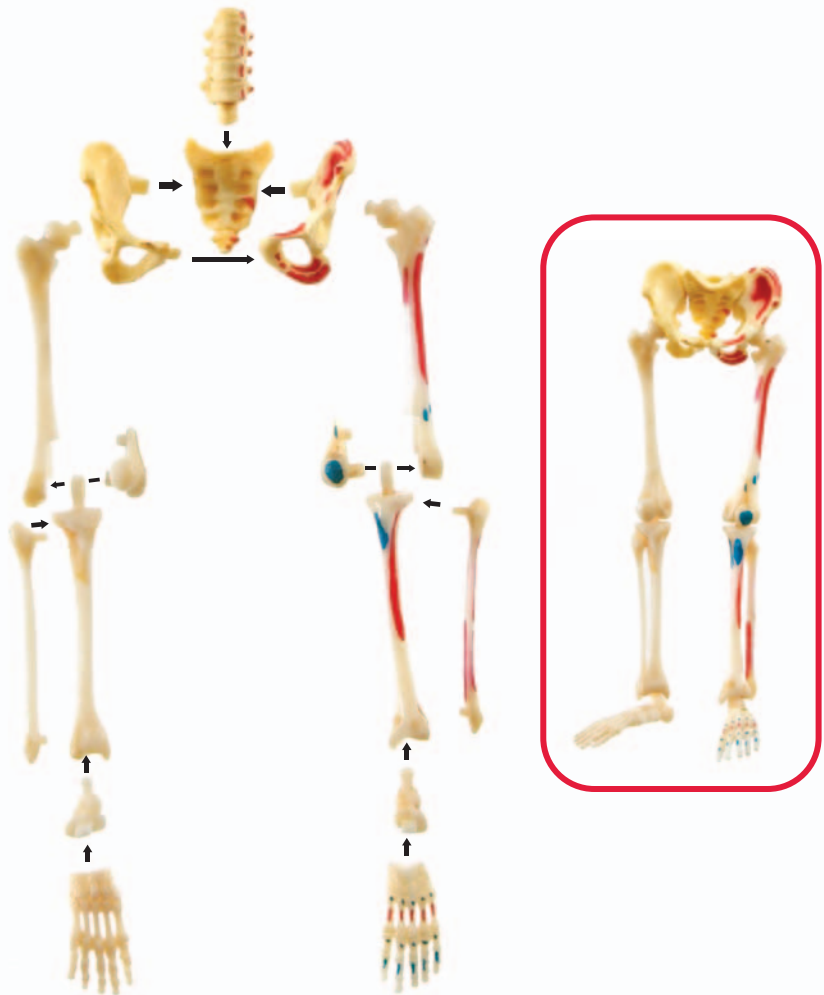
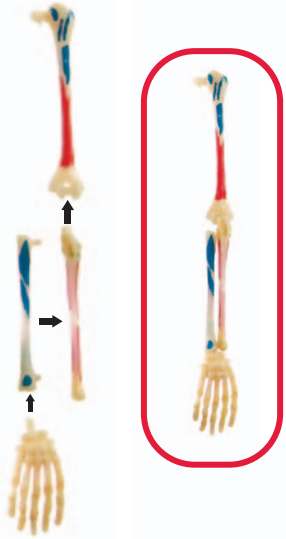
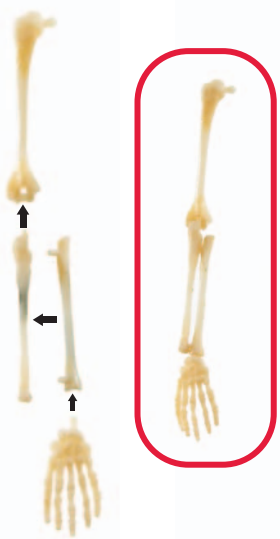
This set of forty-one pieces connects to form a human skeleton that displays the structure's major parts. The model features the following skeletal parts: skull, rib cage, humerus, spinal column, radius, ulna, hand, pelvis, femur, tibia, fibula, and foot.



Skeleton

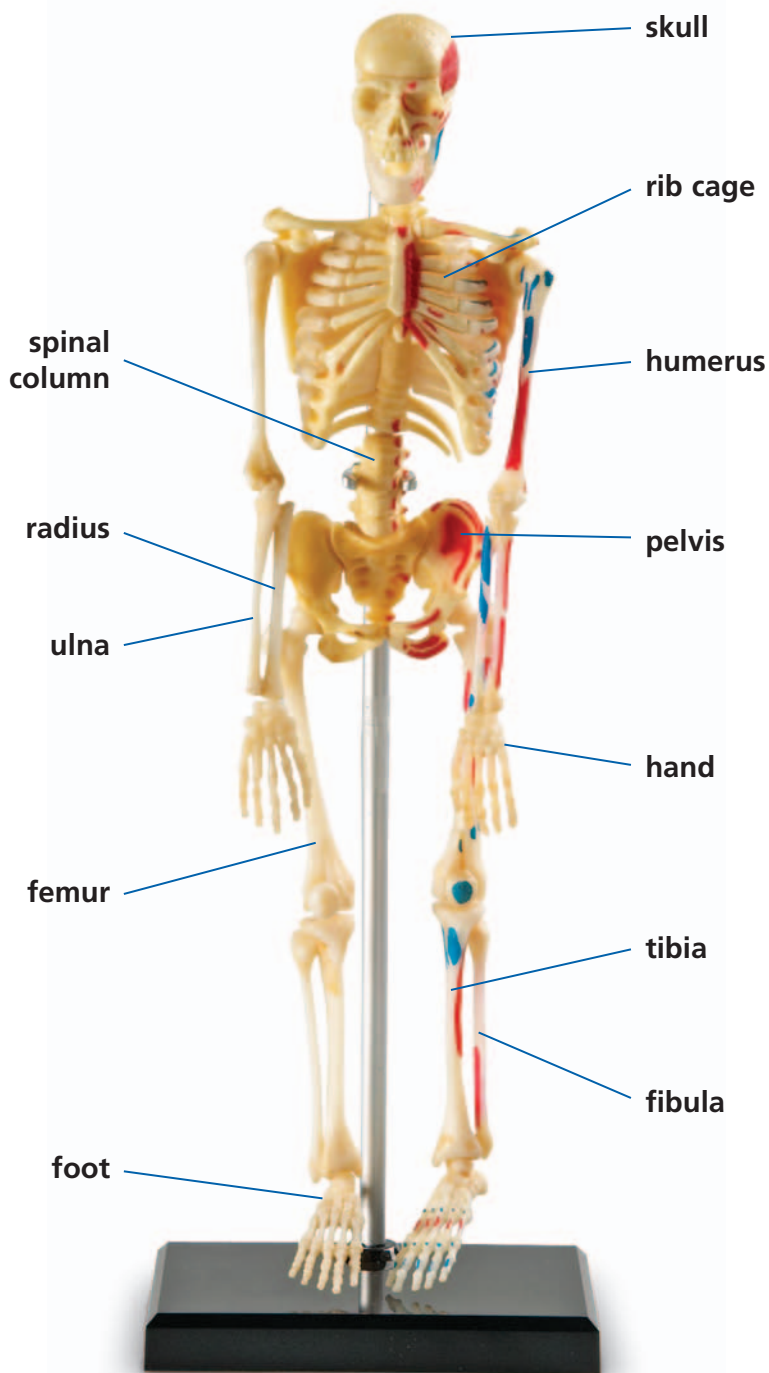
Assembly











skull (head) typically consists of twenty-two bones that protect the brain from injuries and comprise the structure of the face

rib cage typically consists of twelve pairs of ribs that protect the internal organs, such as the heart and lungs, from injury

humerus (upper arm) single long bone in the arm between the shoulder and lower arm

spinal column contains the spinal cord. Comprised of thirty-three flexible vertebrae allow movement of the back and neck.

radius one of two bones in the lower arm; connects the lower arm to the wrist

ulna one of two bones in the lower arm; connects the lower arm to the humerus and creates the point of the elbow

hand typically consists of twenty-seven bones that allow flexibility of the fingers and thumb

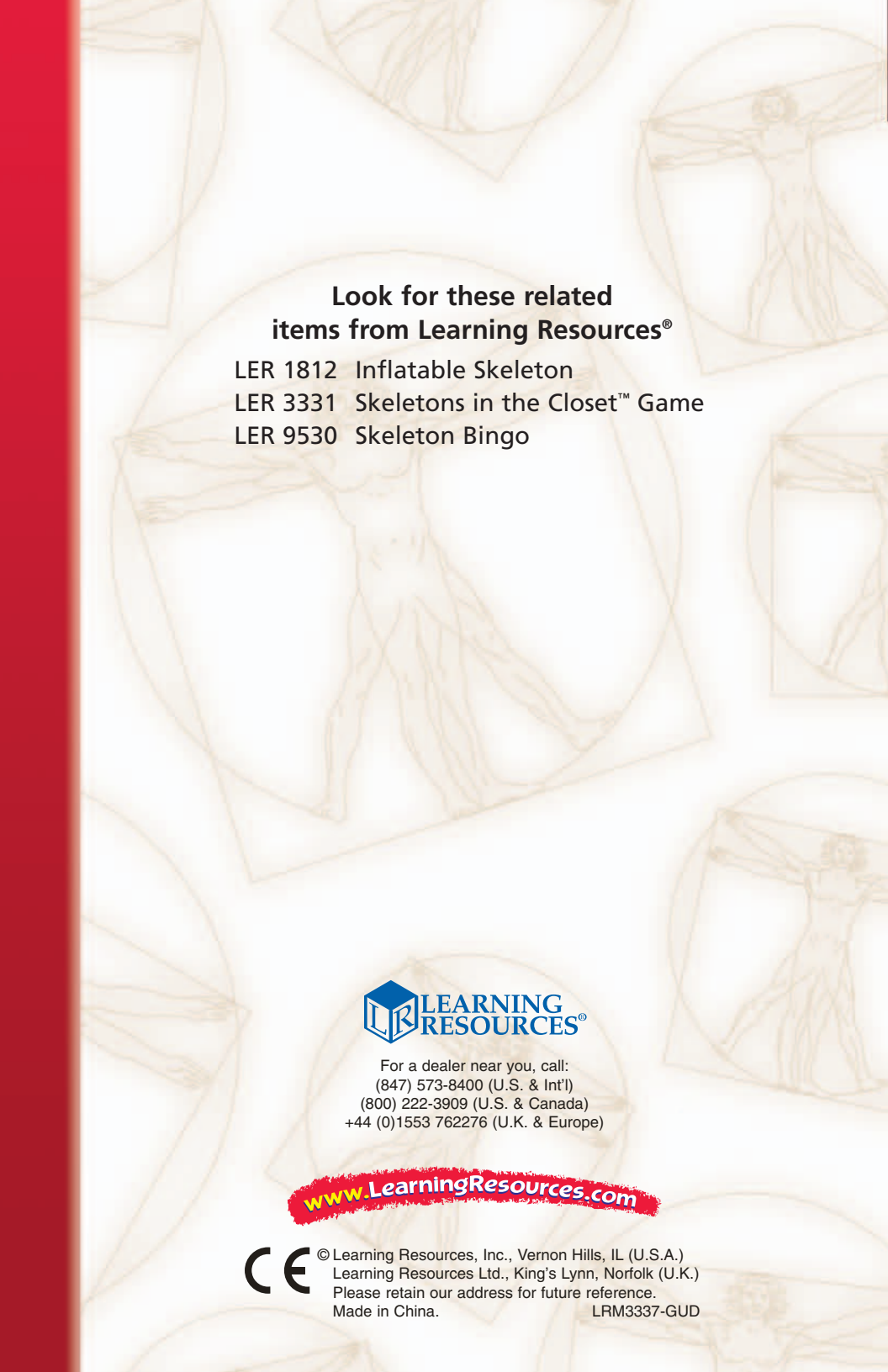
pelvis (hips) supports the weight of the upper body

femur (upper leg) longest and largest bone in the skeletal system

tibia larger of the two lower leg bones; unlike the male tibia, the female tibia is not parallel to the fibula

fibula smaller of the two lower leg bones; helps control movement of the ankle

foot typically consists of twenty-six bones that coordinate balance and mobility

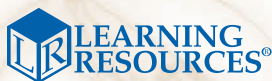


**Look for these related
items from Learning Resources®**

LER 1812 Inflatable Skeleton

LER 3331 Skeletons in the Closet™ Game

LER 9530 Skeleton Bingo



For a dealer near you, call:
(847) 573-8400 (U.S. & Int'l)
(800) 222-3909 (U.S. & Canada)
+44 (0)1553 762276 (U.K. & Europe)

www.LearningResources.com

CE © Learning Resources, Inc., Vernon Hills, IL (U.S.A.)
Learning Resources Ltd., King's Lynn, Norfolk (U.K.)
Please retain our address for future reference.
Made in China. LRM3337-GUD