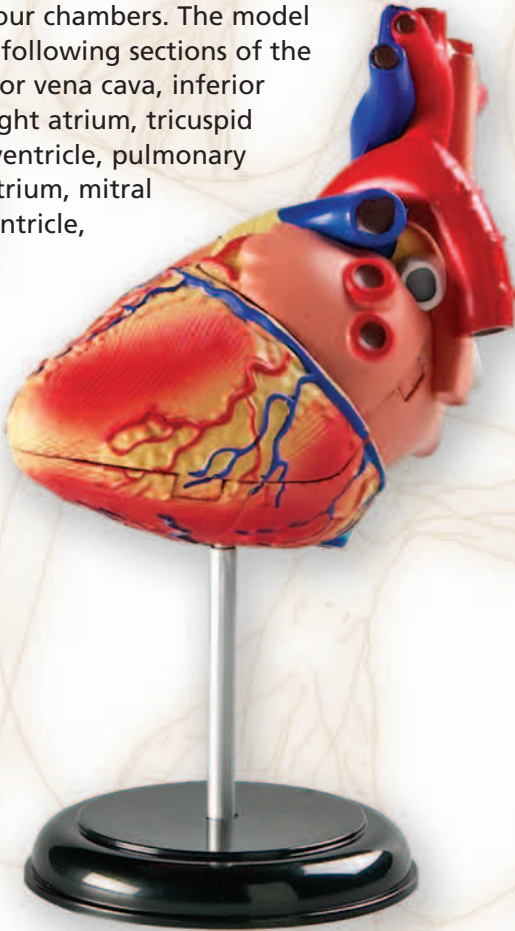


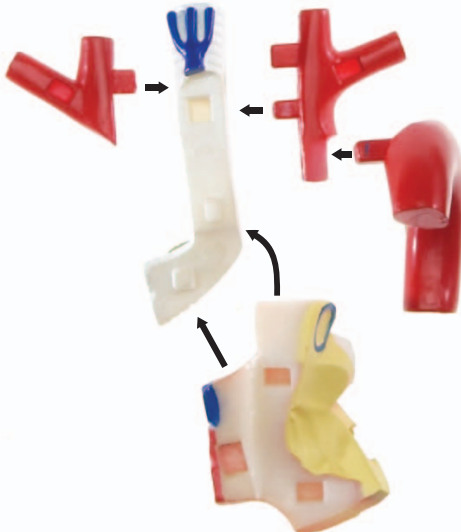
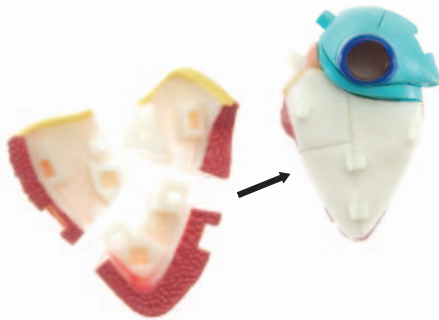
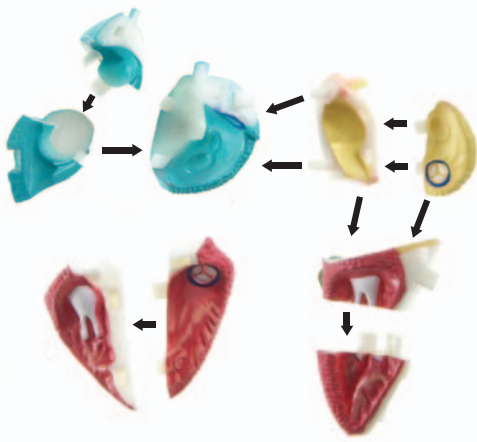
Human Anatomy Model

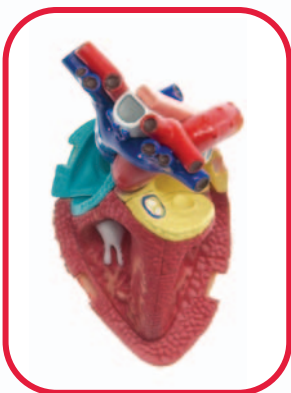
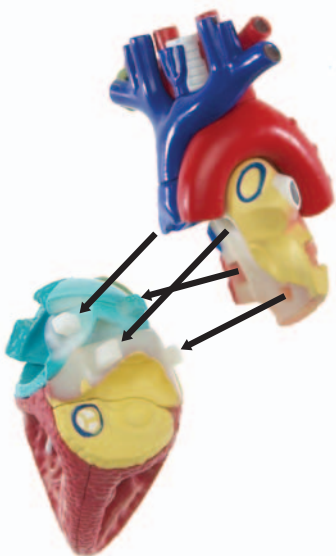
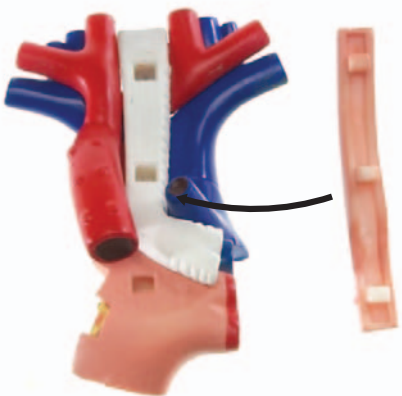
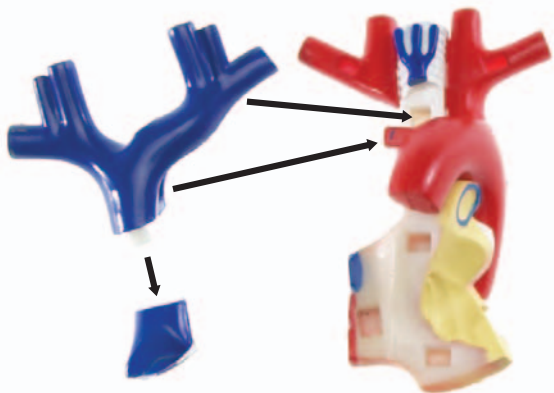
Assembly Guide

This set of twenty-nine pieces connects to form a human heart that displays the organ's major parts. Some pieces are hinged to exhibit the heart's four chambers. The model features the following sections of the heart: superior vena cava, inferior vena cava, right atrium, tricuspid valve, right ventricle, pulmonary artery, left atrium, mitral valve, left ventricle, and aorta.

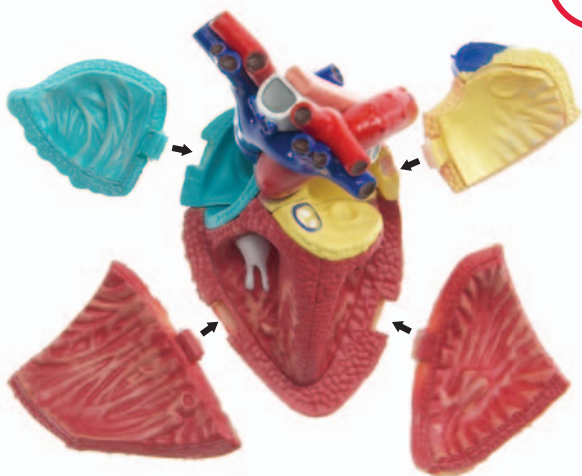
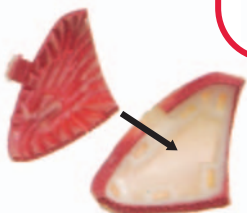
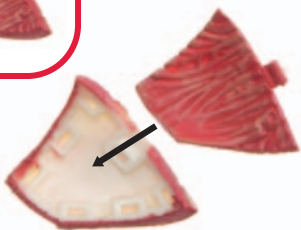
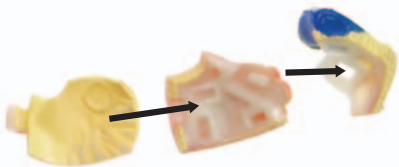
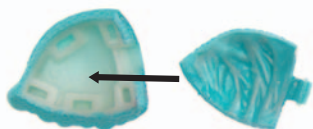


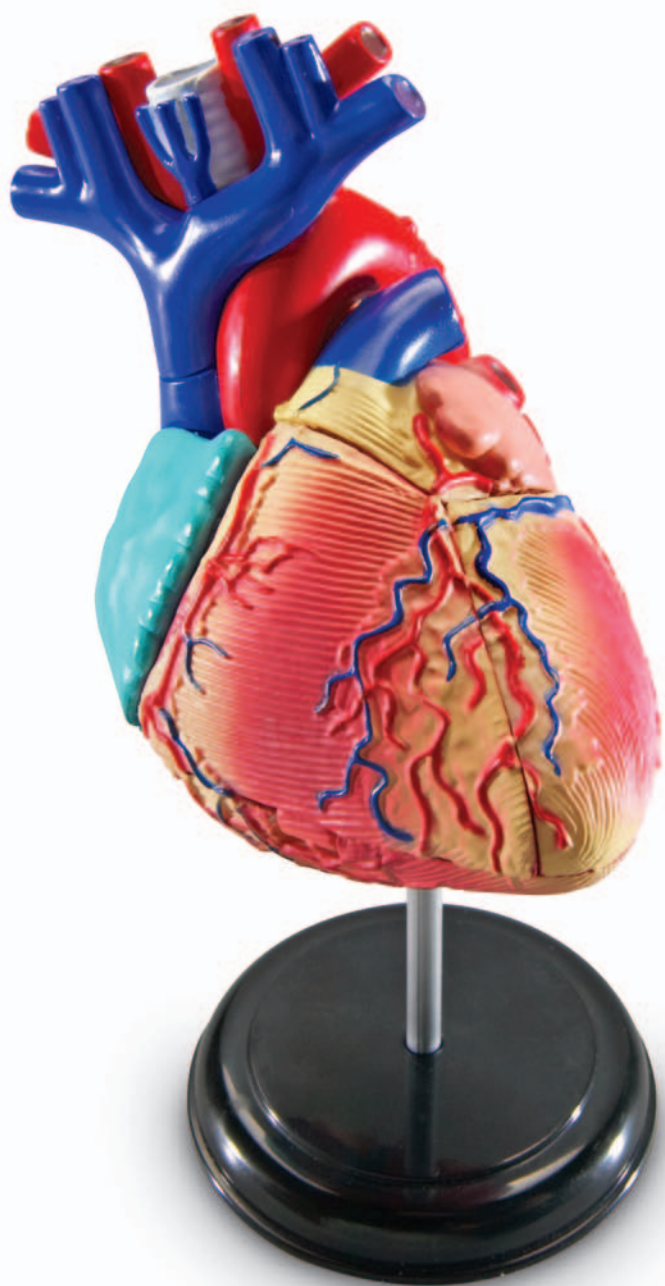
Heart

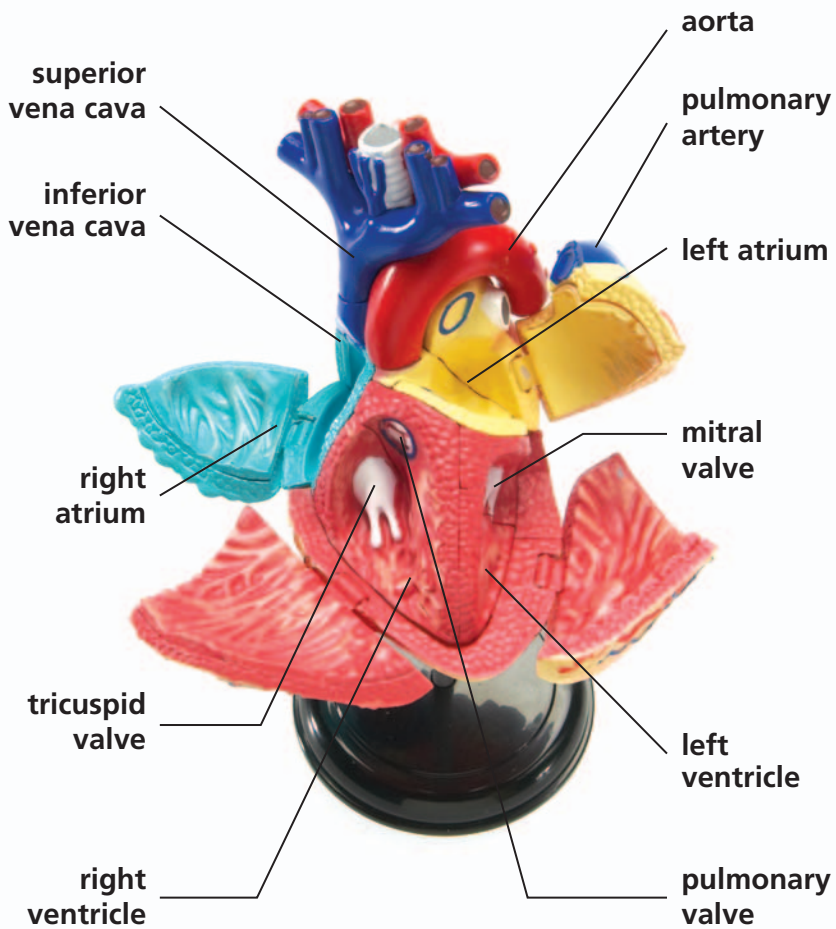




Assembly







superior vena cava large vein that carries oxygen-poor blood from the upper body into the right atrium

inferior vena cava large vein that carries oxygen-poor blood from the lower body into the right atrium

right atrium upper-right chamber of the heart that directs oxygen-poor blood from the superior and inferior vena cava to the right ventricle

tricuspid valve separates the right atrium and right ventricle, preventing blood from flowing in the wrong direction

right ventricle lower-right chamber of the heart that collects oxygen-poor blood from the right atrium, pumping it through the pulmonary valve into the pulmonary artery

pulmonary valve located between the right ventricle and pulmonary artery that prevents blood from flowing in the wrong direction

pulmonary artery the only artery that carries oxygen-poor blood from the heart directly to the lungs

left atrium upper-left chamber of the heart that pumps oxygen-rich blood from the lungs into the left ventricle

mitral valve separates the left atrium and left ventricle, preventing blood from flowing in the wrong direction

left ventricle lower-left chamber of the heart that pumps blood from the left atrium through the aorta to the entire body, except for the lungs.

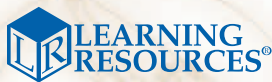
aorta largest artery in the body; carries oxygen-rich blood from the left ventricle to the rest of the body, except for the lungs

**Look for these related
items from Learning Resources®**

LER 1902 Cross-Section Heart Model

LER 3330 Spill Your Guts™ A Human Body Game

LER 3336 Anatomy Model - Human Torso



For a dealer near you, call:
(847) 573-8400 (U.S. & Int'l)
(800) 222-3909 (U.S. & Canada)
+44 (0)1553 762276 (U.K. & Europe)

www.LearningResources.com

CE © Learning Resources, Inc., Vernon Hills, IL (U.S.A.)
Learning Resources Ltd., King's Lynn, Norfolk (U.K.)
Please retain our address for future reference.
Made in China. LRM3334-GUD